



APPENDIX 6

BIRTH AND DEATH DATA DEVELOPED BY OHIO DEPARTMENT OF HEALTH

Birth, Death and Natural Increase [1950-2010]

Ohio	1950	1951	1952	1953	1954	1955	1956	1957	1958	1959	1960	1961	1962	1963	1964	1965
Births	185,559	199,429	206,779	210,727	222,266	222,689	234,517	243,470	234,040	232,578	230,219	229,708	217,465	212,583	209,480	194,927
Deaths	80,505	81,674	83,670	86,050	82,598	85,149	87,669	91,132	91,425	91,204	93,259	92,255	95,174	97,967	96,555	98,292
Natural Increase	105,054	117,755	123,109	124,677	139,668	137,540	146,848	152,338	142,615	141,374	136,960	137,453	122,291	114,616	112,925	96,635
Portage	1950	1951	1952	1953	1954	1955	1956	1957	1958	1959	1960	1961	1962	1963	1964	1965
Births	1,466	1,606	1,785	1,775	1,908	1,956	2,077	2,319	2,319	2,258	2,338	2,422	2,207	2,148	2,103	2,009
Deaths	554	558	585	619	570	609	635	719	743	678	659	675	769	725	777	816
Natural Increase	912	1,048	1,200	1,156	1,338	1,347	1,442	1,600	1,576	1,580	1,679	1,747	1,438	1,423	1,326	1,193
Stark	1950	1951	1952	1953	1954	1955	1956	1957	1958	1959	1960	1961	1962	1963	1964	1965
Births	6,826	7,410	7,608	7,652	7,911	7,370	8,189	8,432	7,957	7,785	7,856	7,559	7,200	6,871	6,802	6,544
Deaths	2,636	2,744	2,832	2,878	2,781	2,803	2,908	3,128	3,076	3,097	3,270	3,211	3,316	3,334	3,437	3,550
Natural Increase	4,190	4,666	4,776	4,774	5,130	4,567	5,281	5,304	4,881	4,688	4,586	4,348	3,884	3,537	3,365	2,994
Summit	1950	1951	1952	1953	1954	1955	1956	1957	1958	1959	1960	1961	1962	1963	1964	1965
Births	10,146	10,586	11,487	11,492	11,913	11,812	12,308	12,860	12,536	12,306	12,071	11,979	11,320	11,173	10,858	10,086
Deaths	3,452	3,527	3,701	3,872	3,683	3,772	3,972	4,198	4,296	4,294	4,263	4,413	4,414	4,665	4,660	4,798
Natural Increase	6,694	7,059	7,786	7,620	8,230	8,040	8,336	8,662	8,240	8,012	7,808	7,566	6,906	6,508	6,198	5,288
Wayne	1950	1951	1952	1953	1954	1955	1956	1957	1958	1959	1960	1961	1962	1963	1964	1965
Births	1,521	1,535	1,621	1,631	1,737	1,650	1,793	1,905	1,810	1,795	1,888	1,868	1,811	1,752	1,653	1,465
Deaths	565	534	584	571	558	621	622	718	618	662	674	659	634	645	690	642
Natural Increase	956	1,001	1,037	1,060	1,179	1,029	1,171	1,187	1,192	1,133	1,214	1,209	1,177	1,107	963	823
10B Total	1950	1951	1952	1953	1954	1955	1956	1957	1958	1959	1960	1961	1962	1963	1964	1965
Births	19,959	21,137	22,501	22,550	23,469	22,788	24,367	25,516	24,622	24,144	24,153	23,828	22,538	21,944	21,416	20,104
Deaths	7,207	7,363	7,702	7,940	7,592	7,805	8,137	8,763	8,733	8,731	8,866	8,958	9,133	9,369	9,564	9,806
Natural Increase	12,752	13,774	14,799	14,610	15,877	14,983	16,230	16,753	15,889	15,413	15,287	14,870	13,405	12,575	11,852	10,298

Natural Increase = Birth minus Death Count

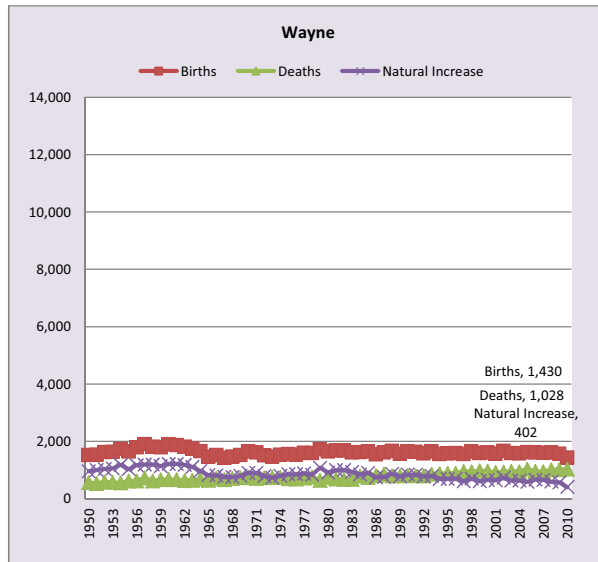
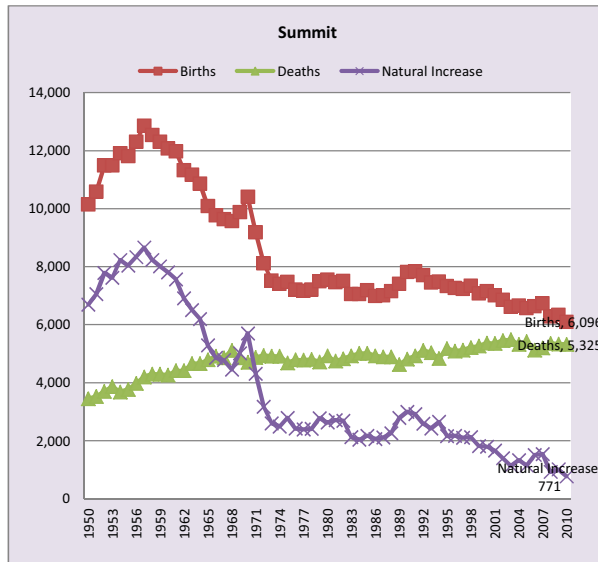
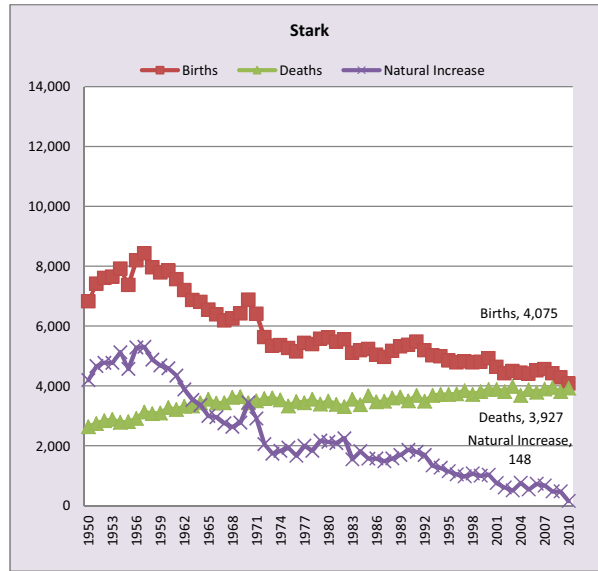
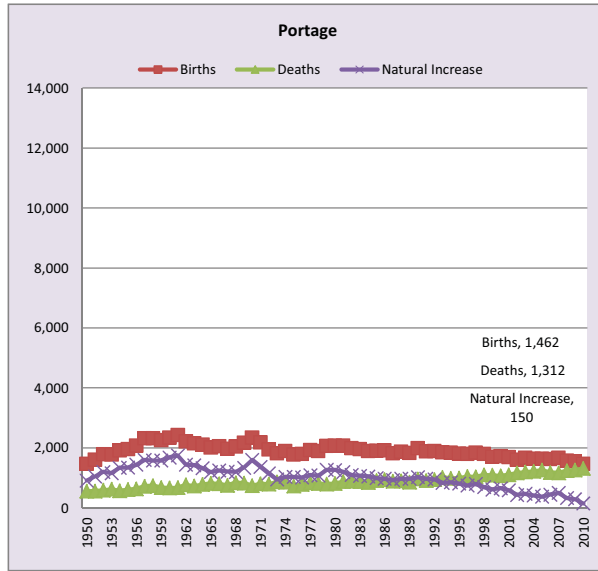
SOURCE: Ohio Dept. of Health, Vital Statistics Office

Produced by: Policy Research & Strategic Planning, Ohio Department of Development (JH, 3/2012)

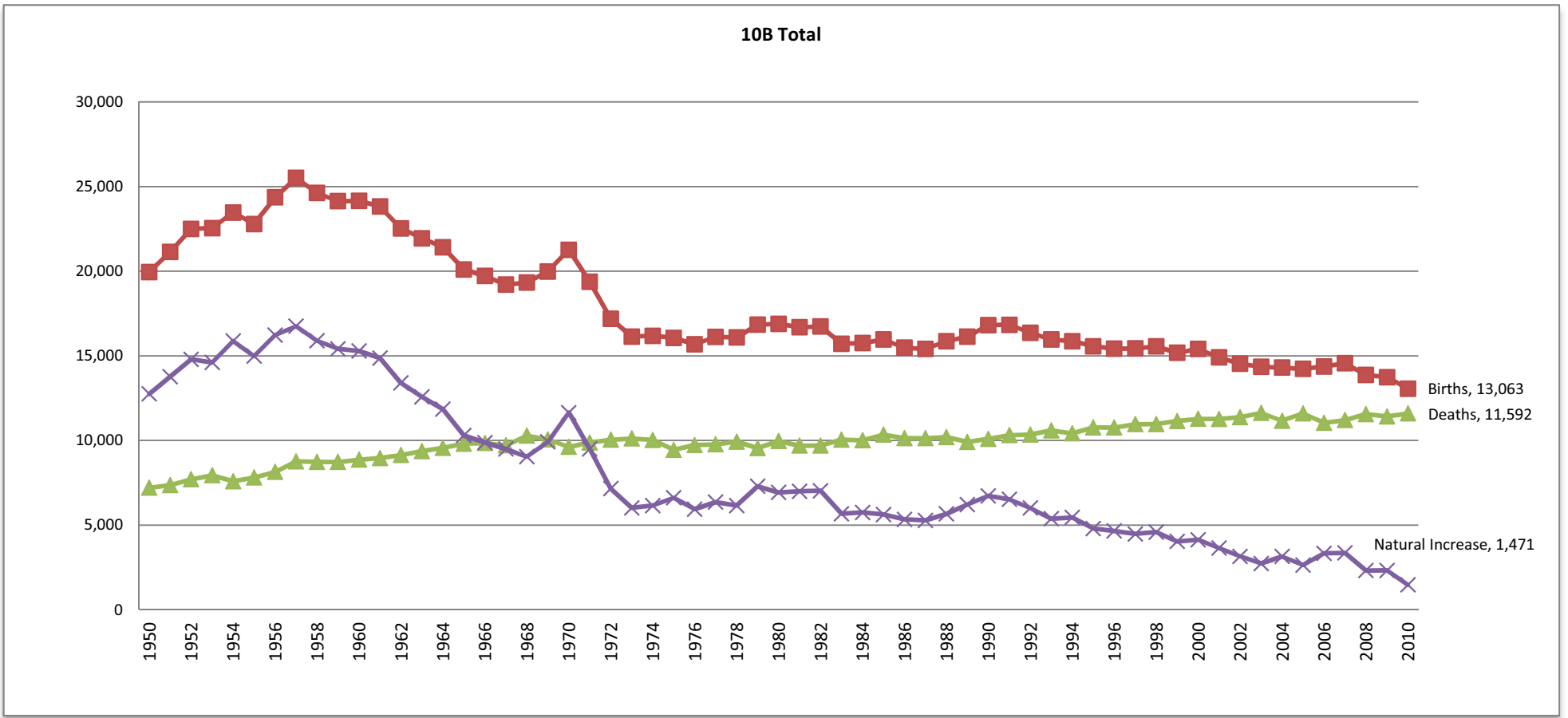
Ohio	1966	1967	1968	1969	1970	1971	1972	1973	1974	1975	1976	1977	1978	1979	1980	1981
Births	190,444	185,204	185,580	189,099	199,781	189,919	169,151	160,436	160,199	158,341	155,215	161,239	160,850	166,731	168,745	166,971
Deaths	98,921	98,041	102,928	101,011	100,264	99,610	101,826	101,346	99,101	96,147	96,000	96,855	96,528	94,821	98,268	96,510
Natural Increase	91,523	87,163	82,652	88,088	99,517	90,309	67,325	59,090	61,098	62,194	59,215	64,384	64,322	71,910	70,477	70,461
Portage	1966	1967	1968	1969	1970	1971	1972	1973	1974	1975	1976	1977	1978	1979	1980	1981
Births	2,050	1,963	2,038	2,166	2,338	2,176	1,941	1,812	1,889	1,768	1,793	1,924	1,891	2,060	2,074	2,073
Deaths	800	752	838	826	735	804	792	861	851	731	778	830	814	793	808	874
Natural Increase	1,250	1,211	1,200	1,340	1,603	1,372	1,149	951	1,038	1,037	1,015	1,094	1,077	1,267	1,266	1,199
Stark	1966	1967	1968	1969	1970	1971	1972	1973	1974	1975	1976	1977	1978	1979	1980	1981
Births	6,384	6,189	6,250	6,416	6,878	6,412	5,628	5,338	5,359	5,265	5,146	5,439	5,389	5,569	5,622	5,478
Deaths	3,426	3,439	3,615	3,644	3,431	3,498	3,572	3,600	3,532	3,328	3,481	3,438	3,552	3,394	3,492	3,386
Natural Increase	2,958	2,750	2,635	2,772	3,447	2,914	2,056	1,738	1,827	1,937	1,665	2,001	1,837	2,175	2,130	2,092
Summit	1966	1967	1968	1969	1970	1971	1972	1973	1974	1975	1976	1977	1978	1979	1980	1981
Births	9,771	9,636	9,567	9,873	10,406	9,178	8,113	7,514	7,405	7,474	7,205	7,165	7,212	7,495	7,550	7,458
Deaths	4,912	4,858	5,115	4,859	4,708	4,872	4,942	4,913	4,912	4,683	4,789	4,777	4,805	4,715	4,922	4,746
Natural Increase	4,859	4,778	4,452	5,014	5,698	4,306	3,171	2,601	2,493	2,791	2,416	2,388	2,407	2,780	2,628	2,712
Wayne	1966	1967	1968	1969	1970	1971	1972	1973	1974	1975	1976	1977	1978	1979	1980	1981
Births	1,520	1,419	1,472	1,528	1,647	1,608	1,517	1,473	1,536	1,555	1,533	1,599	1,593	1,721	1,650	1,684
Deaths	709	659	713	734	747	704	733	741	739	701	684	723	758	645	741	689
Natural Increase	811	760	759	794	900	904	784	732	797	854	849	876	835	1,076	909	995
10B Total	1966	1967	1968	1969	1970	1971	1972	1973	1974	1975	1976	1977	1978	1979	1980	1981
Births	19,725	19,207	19,327	19,983	21,269	19,374	17,199	16,137	16,189	16,062	15,677	16,127	16,085	16,845	16,896	16,693
Deaths	9,847	9,708	10,281	10,063	9,621	9,878	10,039	10,115	10,034	9,443	9,732	9,768	9,929	9,547	9,963	9,695
Natural Increase	9,878	9,499	9,046	9,920	11,648	9,496	7,160	6,022	6,155	6,619	5,945	6,359	6,156	7,298	6,933	6,998

Ohio	1982	1983	1984	1985	1986	1987	1988	1989	1990	1991	1992	1993	1994	1995	1996	1997
Births	164,468	158,697	158,343	160,433	157,950	157,820	160,344	163,776	166,686	165,389	161,990	158,773	155,734	153,747	151,545	151,389
Deaths	94,335	97,477	96,739	98,776	99,601	99,177	100,325	97,938	98,527	100,009	98,892	102,573	102,954	105,563	104,856	105,140
Natural Increase	70,133	61,220	61,604	61,657	58,349	58,643	60,019	65,838	68,159	65,380	63,098	56,200	52,780	48,184	46,689	46,249
Portage	1982	1983	1984	1985	1986	1987	1988	1989	1990	1991	1992	1993	1994	1995	1996	1997
Births	1,991	1,953	1,895	1,901	1,914	1,820	1,874	1,830	1,986	1,876	1,893	1,850	1,840	1,807	1,794	1,837
Deaths	890	881	844	910	940	891	903	860	962	907	942	1,018	985	995	1,046	1,036
Natural Increase	1,101	1,072	1,051	991	974	929	971	970	1,024	969	951	832	855	812	748	801
Stark	1982	1983	1984	1985	1986	1987	1988	1989	1990	1991	1992	1993	1994	1995	1996	1997
Births	5,557	5,102	5,186	5,236	5,038	4,967	5,171	5,320	5,371	5,479	5,186	5,022	4,981	4,852	4,781	4,818
Deaths	3,306	3,557	3,367	3,670	3,465	3,486	3,596	3,628	3,504	3,680	3,490	3,682	3,716	3,710	3,737	3,844
Natural Increase	2,251	1,545	1,819	1,566	1,573	1,481	1,575	1,692	1,867	1,799	1,696	1,340	1,265	1,142	1,044	974
Summit	1982	1983	1984	1985	1986	1987	1988	1989	1990	1991	1992	1993	1994	1995	1996	1997
Births	7,511	7,050	7,051	7,183	6,984	7,006	7,154	7,406	7,818	7,842	7,706	7,457	7,487	7,335	7,262	7,226
Deaths	4,827	4,930	5,011	5,015	4,929	4,897	4,897	4,624	4,818	4,922	5,116	5,037	4,839	5,178	5,094	5,122
Natural Increase	2,684	2,120	2,040	2,168	2,055	2,109	2,257	2,782	3,000	2,920	2,590	2,420	2,648	2,157	2,168	2,104
Wayne	1982	1983	1984	1985	1986	1987	1988	1989	1990	1991	1992	1993	1994	1995	1996	1997
Births	1,675	1,614	1,624	1,643	1,548	1,616	1,666	1,573	1,647	1,635	1,582	1,641	1,561	1,575	1,586	1,558
Deaths	678	680	784	743	807	857	802	799	808	801	803	855	874	886	887	954
Natural Increase	997	934	840	900	741	759	864	774	839	834	779	786	687	689	699	604
10B Total	1982	1983	1984	1985	1986	1987	1988	1989	1990	1991	1992	1993	1994	1995	1996	1997
Births	16,734	15,719	15,756	15,963	15,484	15,409	15,865	16,129	16,822	16,832	16,367	15,970	15,869	15,569	15,423	15,439
Deaths	9,701	10,048	10,006	10,338	10,141	10,131	10,198	9,911	10,092	10,310	10,351	10,592	10,414	10,769	10,764	10,956
Natural Increase	7,033	5,671	5,750	5,625	5,343	5,278	5,667	6,218	6,730	6,522	6,016	5,378	5,455	4,800	4,659	4,483

Ohio	1998	1999	2000	2001	2002	2003	2004	2005	2006	2007	2008	2009	2010
Births	152,457	151,598	155,721	151,410	147,832	148,483	148,855	148,255	150,510	150,784	148,592	144,569	139,034
Deaths	105,577	108,034	107,992	107,560	109,072	108,590	106,261	109,008	106,381	103,720	106,573	107,062	108,458
Natural Increase	46,880	43,564	47,729	43,850	38,760	39,893	42,594	39,247	44,129	47,064	42,019	37,507	30,576
Portage	1998	1999	2000	2001	2002	2003	2004	2005	2006	2007	2008	2009	2010
Births	1,791	1,703	1,723	1,692	1,599	1,663	1,632	1,632	1,619	1,669	1,566	1,553	1,462
Deaths	1,098	1,090	1,065	1,104	1,166	1,195	1,216	1,259	1,177	1,168	1,235	1,266	1,312
Natural Increase	693	613	658	588	433	468	416	373	442	501	331	287	150
Stark	1998	1999	2000	2001	2002	2003	2004	2005	2006	2007	2008	2009	2010
Births	4,788	4,809	4,918	4,637	4,417	4,492	4,443	4,408	4,514	4,562	4,418	4,279	4,075
Deaths	3,716	3,811	3,885	3,887	3,813	3,986	3,682	3,873	3,786	3,894	3,947	3,808	3,927
Natural Increase	1,072	998	1,033	750	604	506	761	535	728	668	471	471	148
Summit	1998	1999	2000	2001	2002	2003	2004	2005	2006	2007	2008	2009	2010
Births	7,337	7,078	7,157	7,015	6,852	6,611	6,657	6,568	6,631	6,738	6,279	6,342	6,096
Deaths	5,212	5,265	5,365	5,352	5,459	5,483	5,323	5,423	5,126	5,200	5,357	5,337	5,325
Natural Increase	2,125	1,813	1,792	1,663	1,393	1,128	1,334	1,145	1,505	1,538	922	1,005	771
Wayne	1998	1999	2000	2001	2002	2003	2004	2005	2006	2007	2008	2009	2010
Births	1,643	1,593	1,613	1,567	1,663	1,585	1,577	1,623	1,613	1,597	1,608	1,570	1,430
Deaths	942	980	961	925	937	957	942	1,035	951	942	1,015	1,007	1,028
Natural Increase	701	613	652	642	726	628	635	588	662	655	593	563	402
10B Total	1998	1999	2000	2001	2002	2003	2004	2005	2006	2007	2008	2009	2010
Births	15,559	15,183	15,411	14,911	14,531	14,351	14,309	14,231	14,377	14,566	13,871	13,744	13,063
Deaths	10,968	11,146	11,276	11,268	11,375	11,621	11,163	11,590	11,040	11,204	11,554	11,418	11,592
Natural Increase	4,591	4,037	4,135	3,643	3,156	2,730	3,146	2,641	3,337	3,362	2,317	2,326	1,471

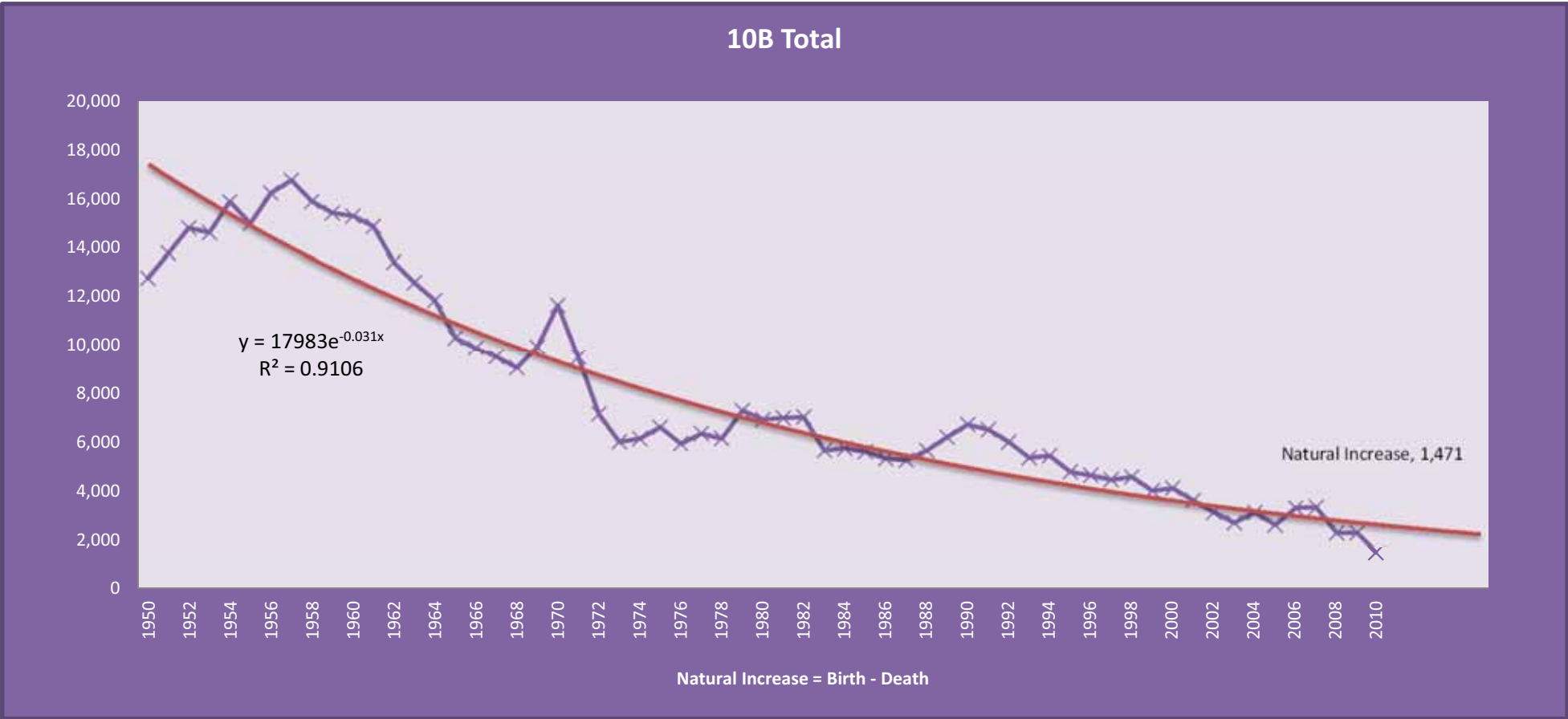


Trend of Birth, Death and Natural Increase: 10B Total



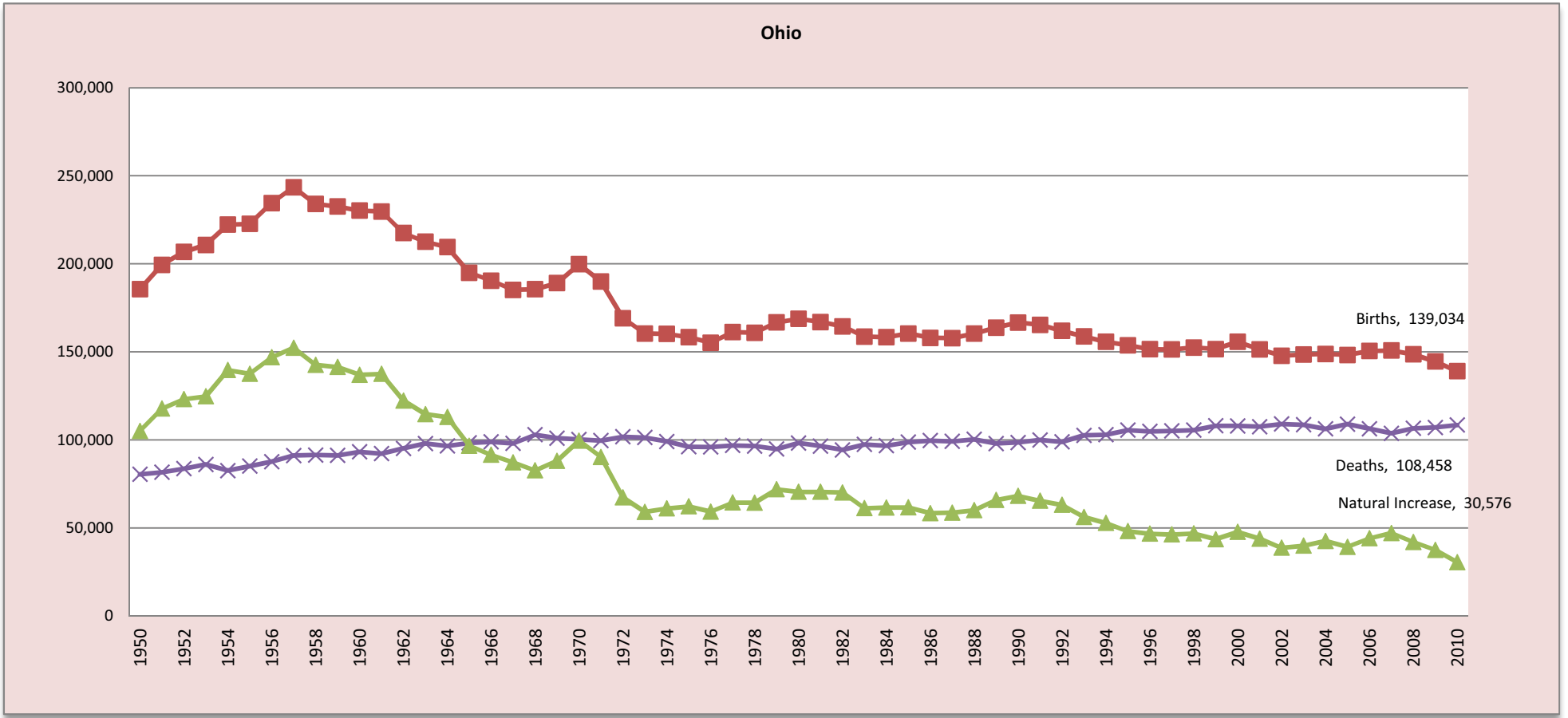
Natural Increase = Birth - Death

Trend of Natural Increase: 10B Total



Natural Increase = Birth - Death

Trend of Birth, Death and Natural Increase: Ohio



Natural Increase = Birth - Death